

**SOILS**  
**5020**

# UNVEIL THE FUTURE WITH JAPANESE TECHNOLOGY

POWERFUL E3 ENGINE  
UNDERHOOD SILENCER



ADVANCE EUROPEAN  
AERODYNAMIC DESIGN



6 STAGE  
COOLING



STYLISH TWIN PROJECTOR  
WITH DRL & LED LAMPS



SUPER QUICK POWER  
STEERING



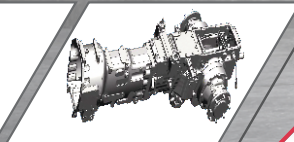
TURN PLUS  
TECHNOLOGY



HIGH LUG TYRE



NEXT GENERATION SEALED  
12F + 12R TRANSMISSION



JAPANESE  
TECHNOLOGY  
**4WD**  
Expert



JAPANESE  
TECHNOLOGY  
Expert



SHUTTLE XL

SUPER  
YNCHRO >> GEAR SHIFT ON THE GO >>>

[www.solistractors.lk](http://www.solistractors.lk)

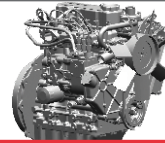
## SPECIFICATIONS - 5020

Engine		
Engine HP		50
No. of Cylinders		3
Rated RPM		2100
Max Torque (Nm)		205
Air Cleaner	Dry Air Cleaner With Clogging Sensor	
Transmission		
Clutch Type	Double Clutch ( Independent PTO )	
Gear Box	12F+12R	
Max Speed (kmph)	31.7	
Brake		
Brake Type	Oil Immersed Brake	
Hydraulics		
Lift Capacity (kg)	2000 Kg	
3 Point Linkage	CAT II	
Hydraulic Control	2SA/1SA	
Steering		
Steering	Power	
PTO		
PTO Standard RPM	540/540E	
Tyre		
Tyre	Front	8X18 HighLug
	Rear	14.9X28 HighLug
Fuel Tank		
Capacity (L)	64	
Dimensions		
Wheel Base (mm)	2190	
Length (mm)	3772	
Other		
ROPS	Standard	

\*Since product upgradation is a continuous process, specification and details provided are subject to change without any prior intimation.  
\*Terms and condition apply.

Dealership stamp

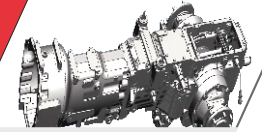
\*Options Available



### ENGINE

- E3 Engine having Xtra Power, Xtra Torque and Xtra Pickup.
- High Engine Torque of 205Nm
- Efficient combustion system (EFC) ensure zero RPM drop in difficult application

- 12F + 12R Shuttle speed transmission for every need
- Super Synchro for on the go gearshift
- Sealed transmission suitable for wet land puddling operations
- Maximum speed of 31.7 km h for best in class productivity in haulage application



### NEXT GENERATION TRANSMISSION



### TURN PLUS TECHNOLOGY

- Super quick power steering for fatigue free operation
- Sealed portal front axle for puddling operation.
- High ground clearance of 350mm
- Best in class turning radius of 3.08 m

- Offers highest PTO power which gives better pulverization
- Economy PTO also available which saves fuel in light applications like alternator
- Sealed PTO prevents water entry during puddling operations
- Independent PTO Clutch for trouble free operation in rotavator application



### PTO



### STYLING

- Advance European Aerodynamic Design
- Aerodynamic Sloping hood design ensures better visibility
- Stylish twin projector with DRL & LED lamps



**INTERNATIONAL TRACTORS LIMITED**

International Business Office: Teri School of Advanced Studies, Plot No.10, Institutional Area, Vasant Kunj, New Delhi-110070 (India)  
Phone: +91 11 66 45 5200 | Work: Jalandhar Road, Hoshiarpur - 146022, Punjab (India) | Phone: +91-01882-522220/ 522221  
Fax: +91- 01882-522222 | URL: www.solistractors.lk